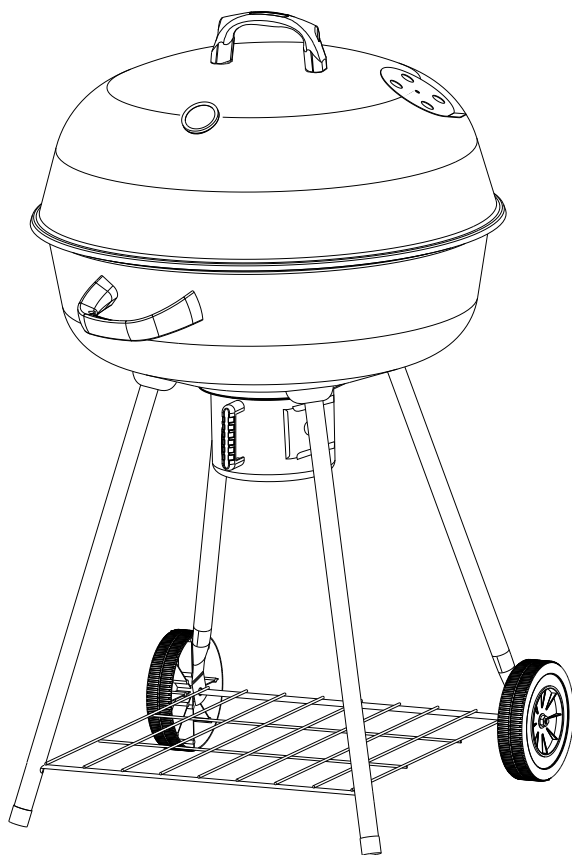










# ISTRUZIONI MONTAGGIO

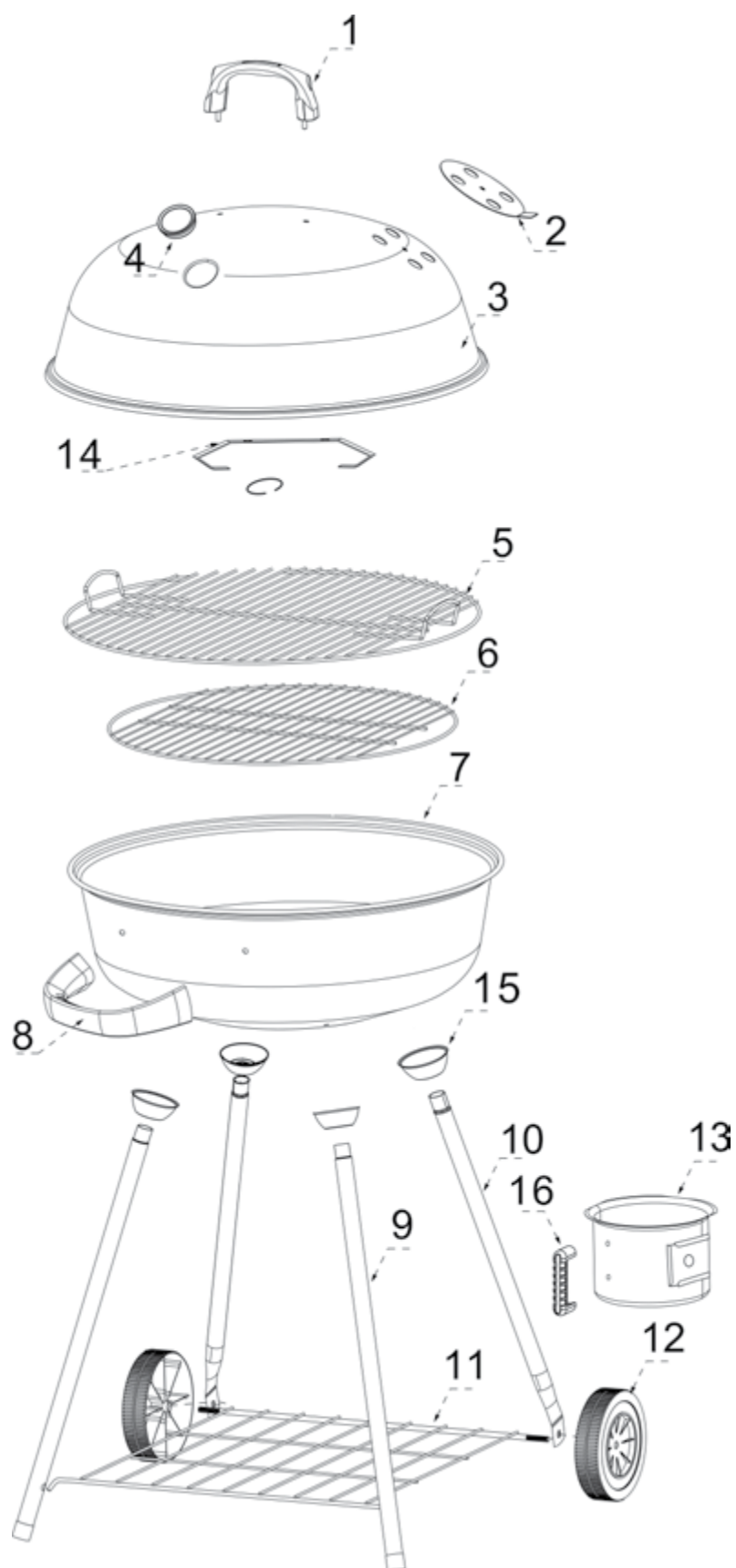
## BARBECUE A CARBONELLA ROUND 61



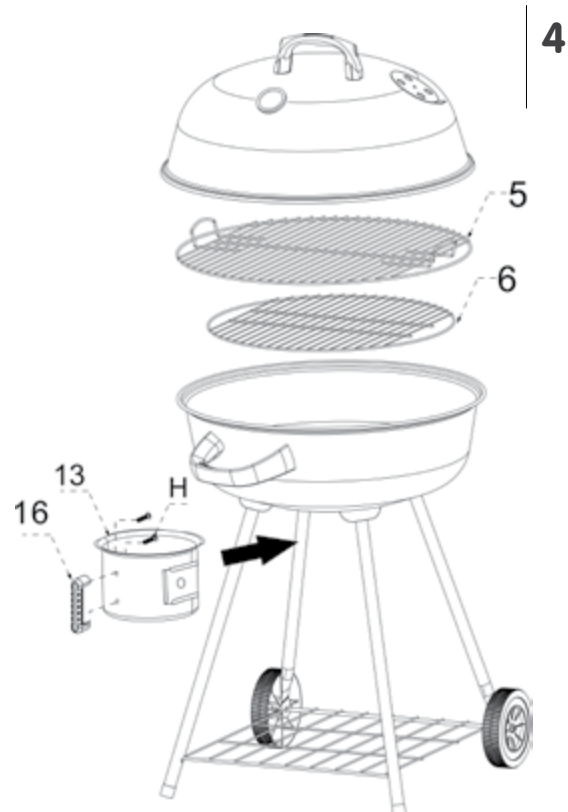
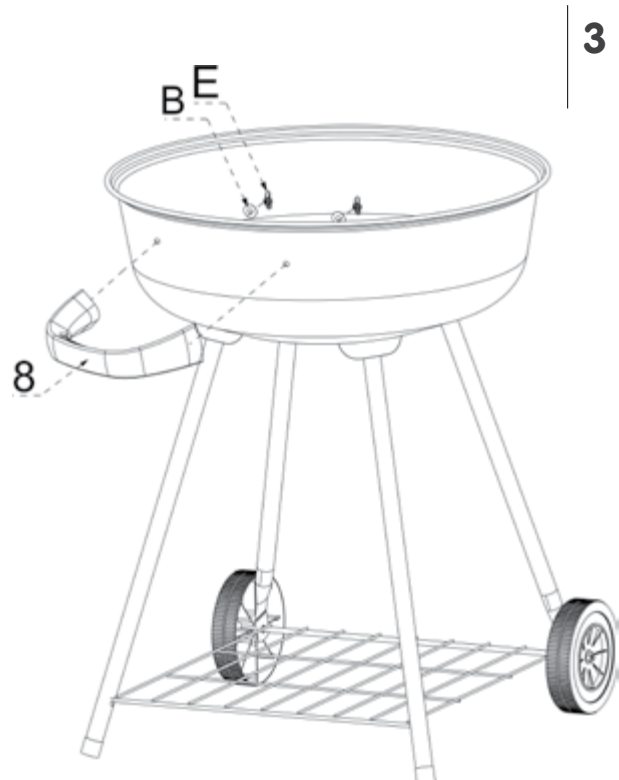
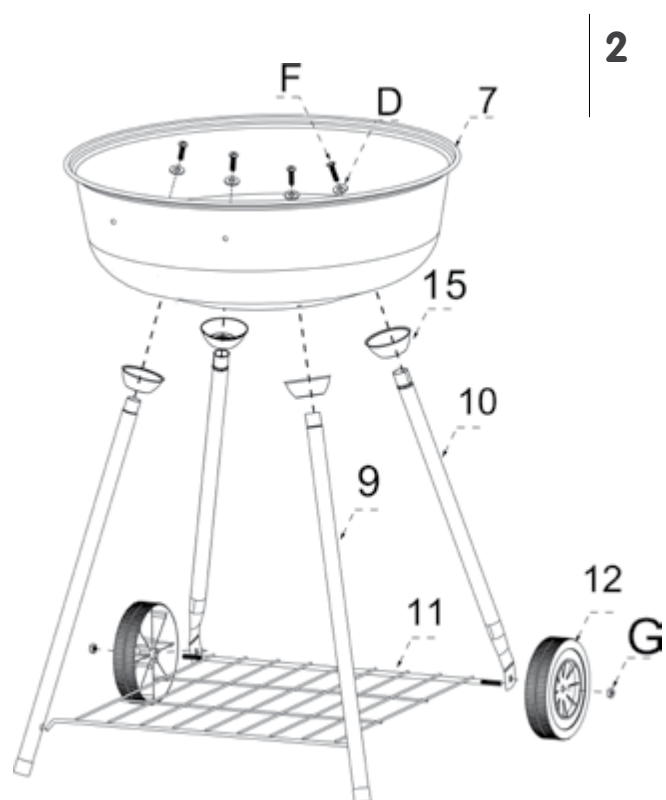
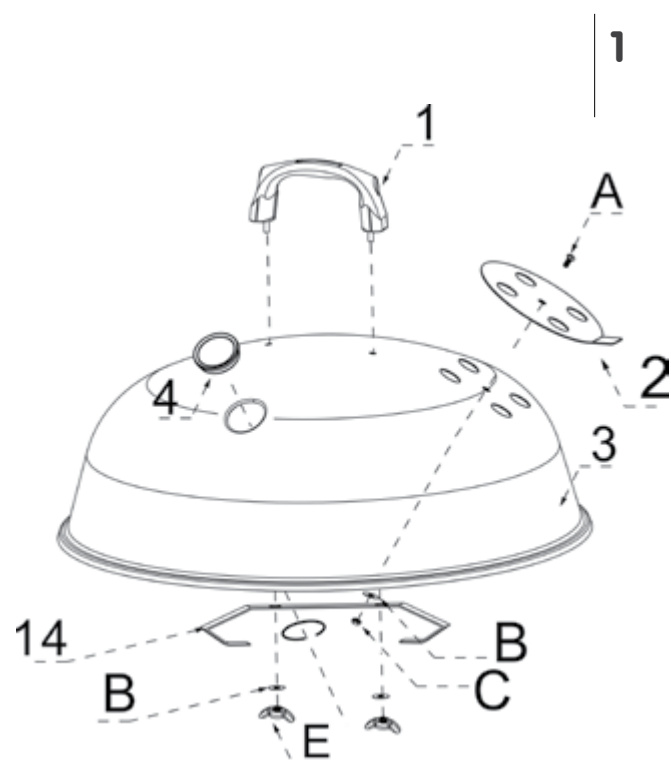
## COMPONENTI

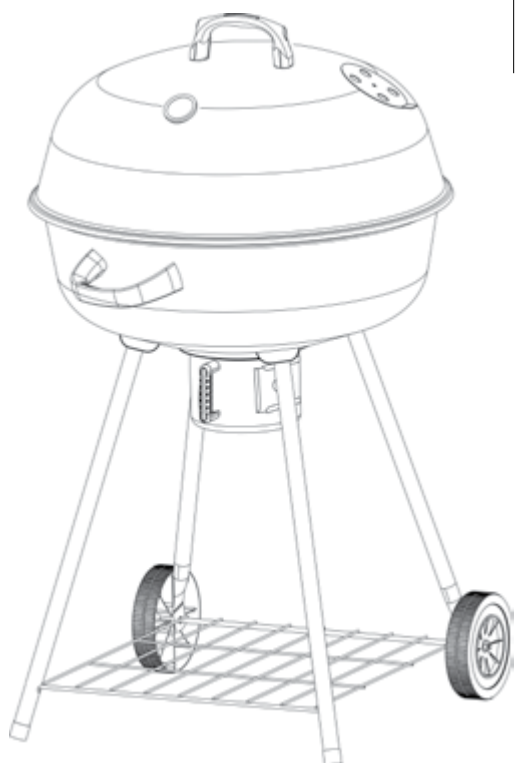
Rif.	Descrizione	Quantità
1	Maniglia coperchio	1
2	Pres a d'aria, valvola a farfalla	1
3	Coperchio	1
4	Termometro	1
5	Griglia di cottura	1
6	Griglia carbonella	1
7	Braci ere	1
8	Maniglia braci ere	1
9	Gambe con piedino	2
10	Gambe con innesto per ruota	2
11	Ripiano inferiore	1
12	Ruote	2
13	Raccoglitore cenere	1
14	Gancio coperchio	1
15	Coppette gambe	4
16	Maniglia raccoglitore cenere	1

Rif.	Descrizione	Quantità
A		1
B		5
C		1
D		4
E		4
F		4
G		2
H		2



# ASSEMBLAGGIO





**5**

**!**

PRIMA DELL'UTILIZZO LEGGERE ATTENTAMENTE LE AVVERTENZE RIPORTATE SUL MANUALE D'USO.

ATTENZIONE, UTILIZZARE SOLO ACCENDIFUOCO CONFORMI ALLO STANDARD EN 1860-3.

Inquadra il codice QR con il  
tuo smartphone per scaricare  
una copia di questo manuale



Lo trovi anche alla pagina  
[www.q-bo.net/manuali](http://www.q-bo.net/manuali)

Made in China

