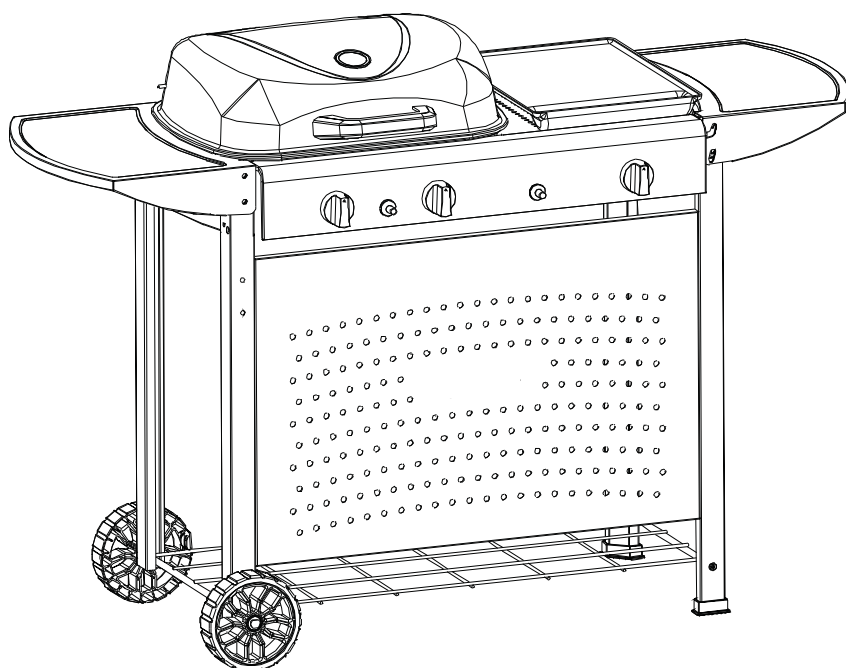


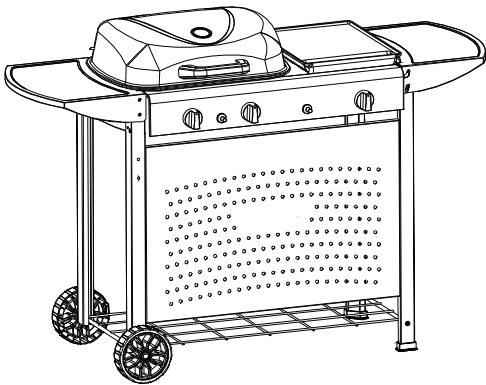


ISTRUZIONI MONTAGGIO

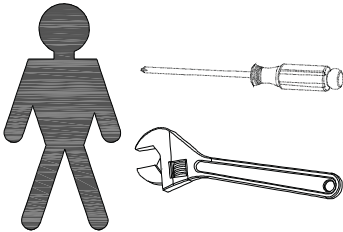
BARBECUE A GAS CHEFFO



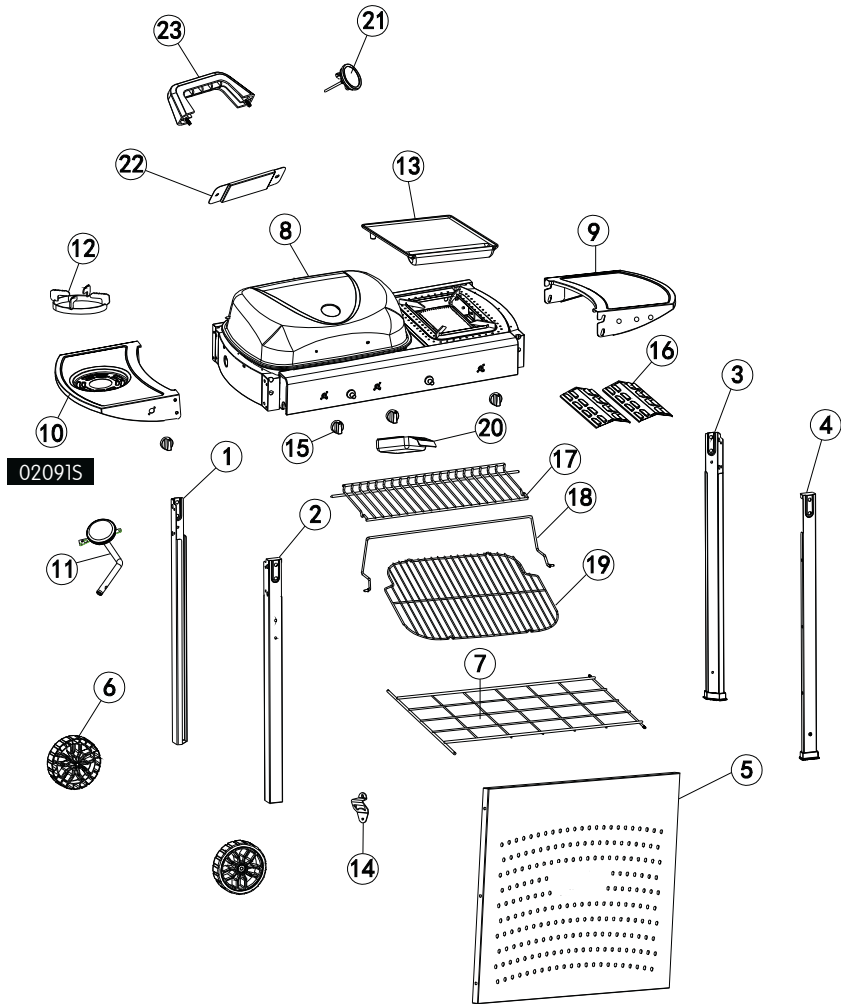
COMPONENTI



Tempo di assemblaggio
50-60 minuti



Riferimenti grafici e illustrazioni sono puramente
indicativi e possono differire leggermente dalla realtà.



1 LB*1	2 LF *1	3 RB *1
4 RF *1	5 *1	6 *2
7 *1	8 *1	9 *1
10 *1	11 *1	12 *1
02091S		
13 *1	14 *1	15 *4
16 *2	17 *1	18 *1
19 *1	20 *1	21 *1
22 *1	23 *1	
A*1	B M5-12*19	C M6*2
D *2	E M5*3	F M6-20*4
G M6-15*4	H M4-12*6	I M5*2

!
PRIMA DELL'UTILIZZO LEGGERE ATTENTAMENTE LE
AVVERTENZE RIPORTATE SUL MANUALE D'USO.

ASSEMBLAGGIO 02091 (3 Fuochi) / 02091S (4 Fuochi)

1

A		1PC
C		2PCS
D		2PCS

2

B		6PCS
---	--	------

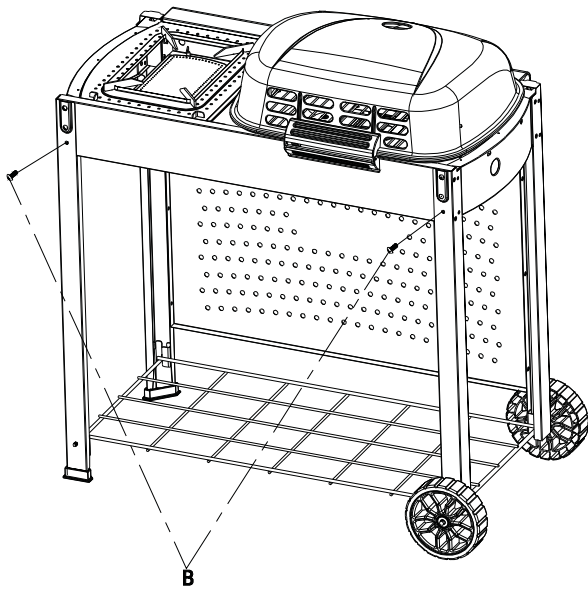
3

B		4PCS
---	--	------

4

B		4PCS
---	--	------

5

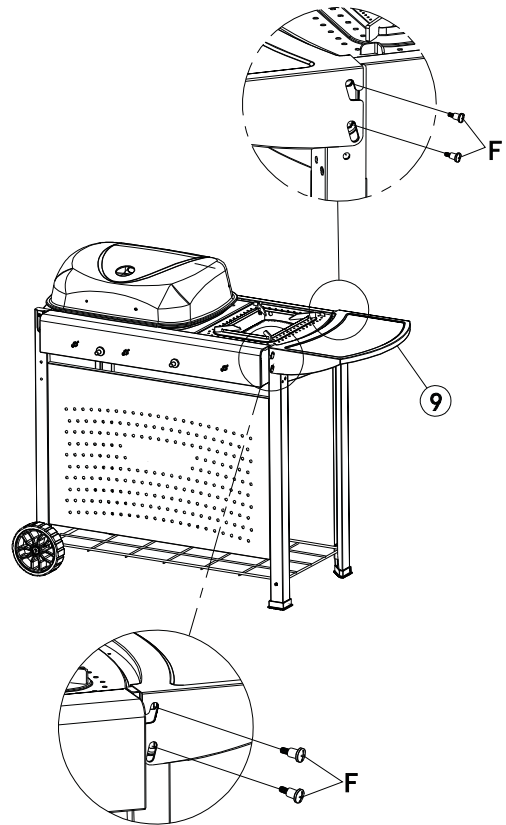


B



2PCS

6

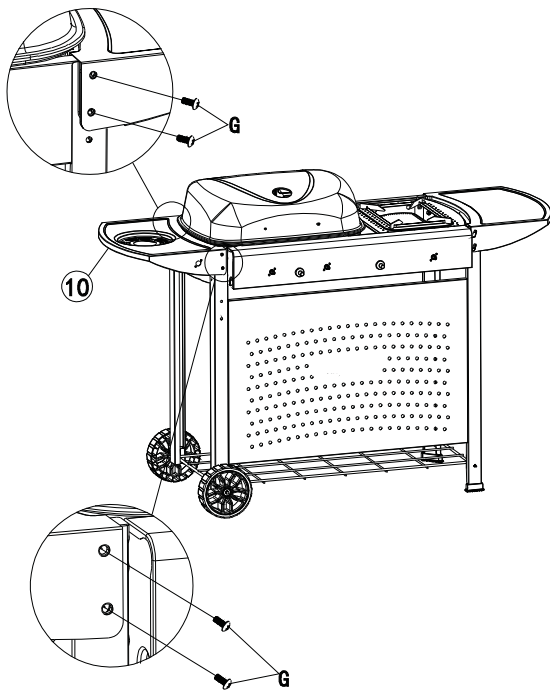


F



4PCS

7

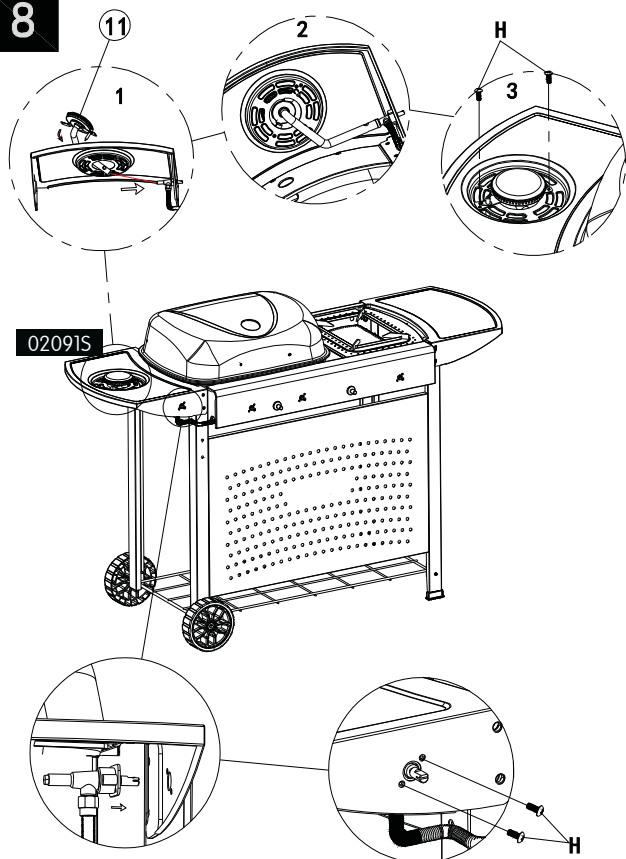


G



4PCS

8

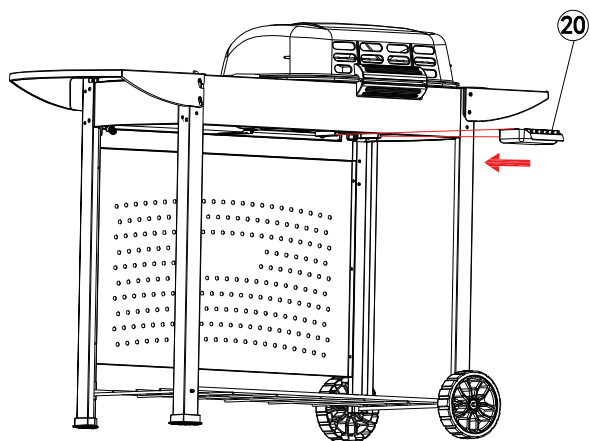


H

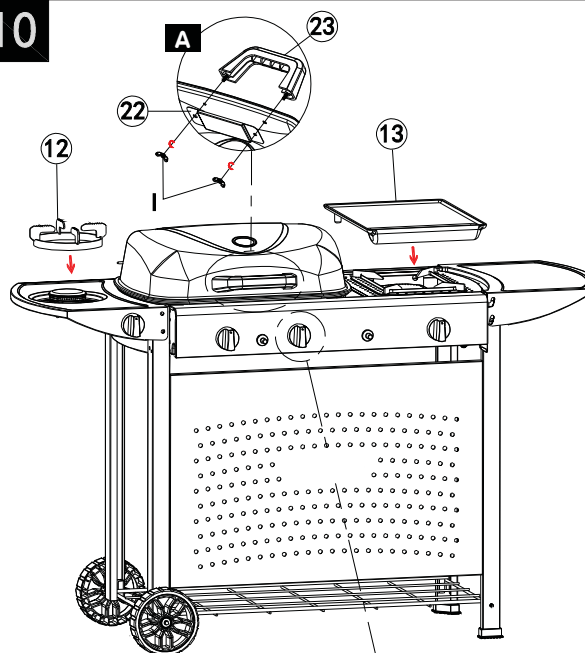


4PCS

9



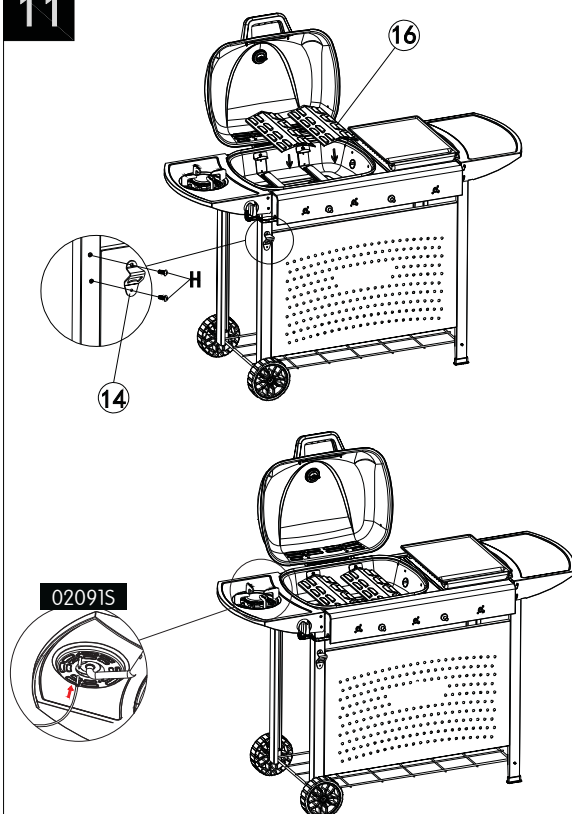
10



A Svitare i dadi sulla maniglia, infilare la maniglia nei fori del coperchio e stringere i dadi a farfalla.

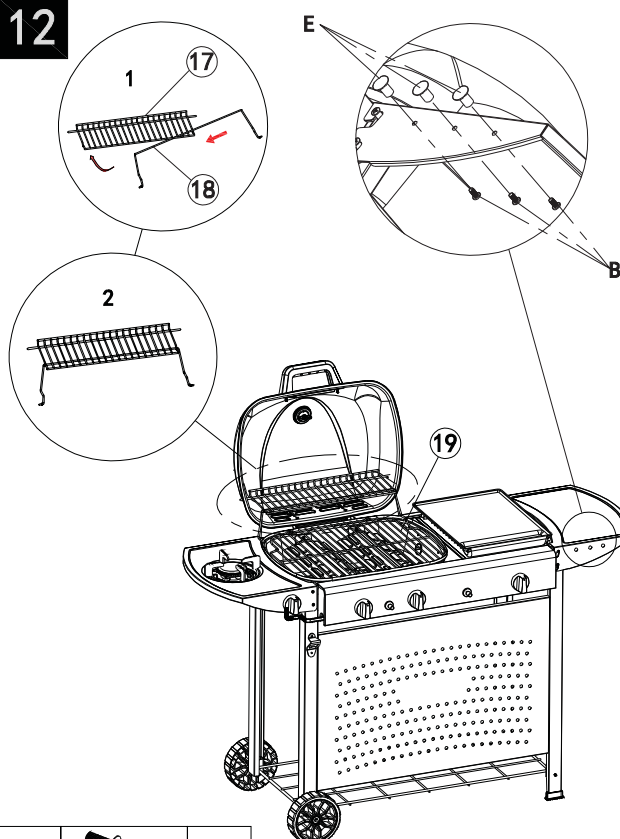
I		2PCS
---	--	------

11



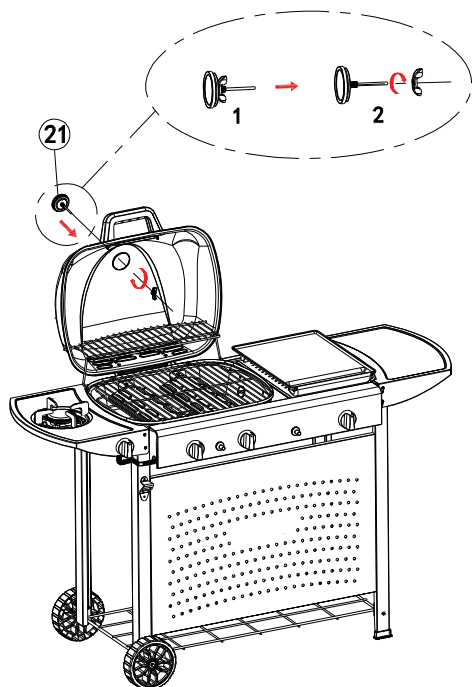
H		2PCS
---	--	------

12



B		3PCS
---	--	------

E		3PCS
---	--	------



Inquadra il codice QR con il
tuo smartphone per scaricare
una copia di questo manuale



Lo trovi anche alla pagina
www.q-bo.net/manuali

Made in China

