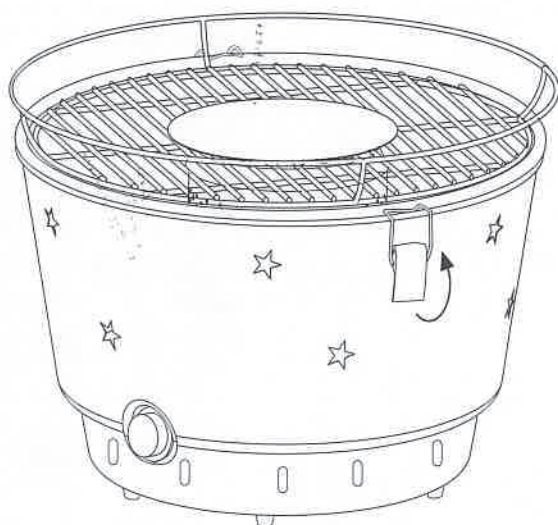


# ISTRUZIONI MONTAGGIO

## BARBECUE A CARBONELLA QUICK



## COMPONENTI

! Prima dell'utilizzo leggere attentamente le avvertenze riportate sul manuale d'uso.



Griglia di cottura



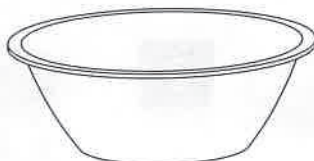
Coperchio contenitore carbone



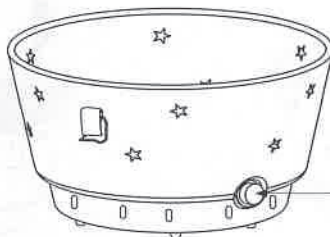
Contenitore carbone



Supporto contenitore carbone



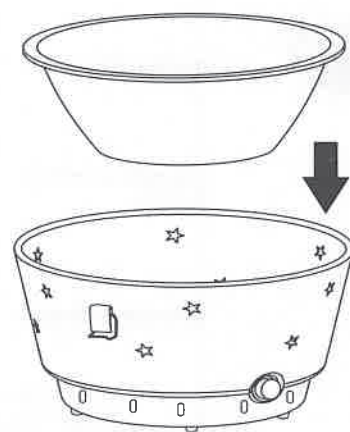
Catino interno



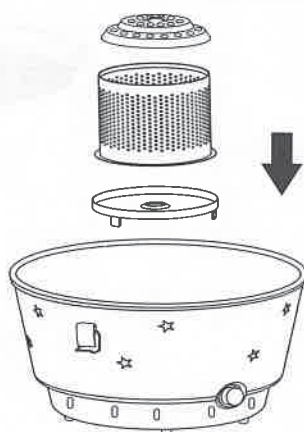
Corpo del barbecue

Regolatore ventola elettrica

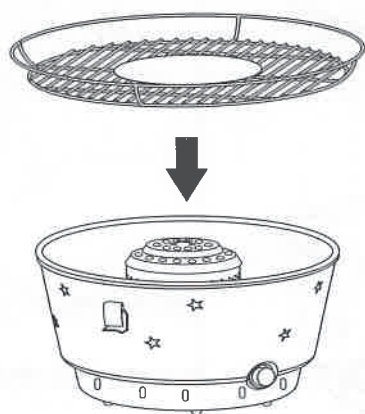
## ASSEMBLAGGIO



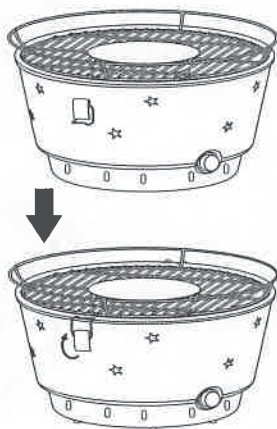
1



2



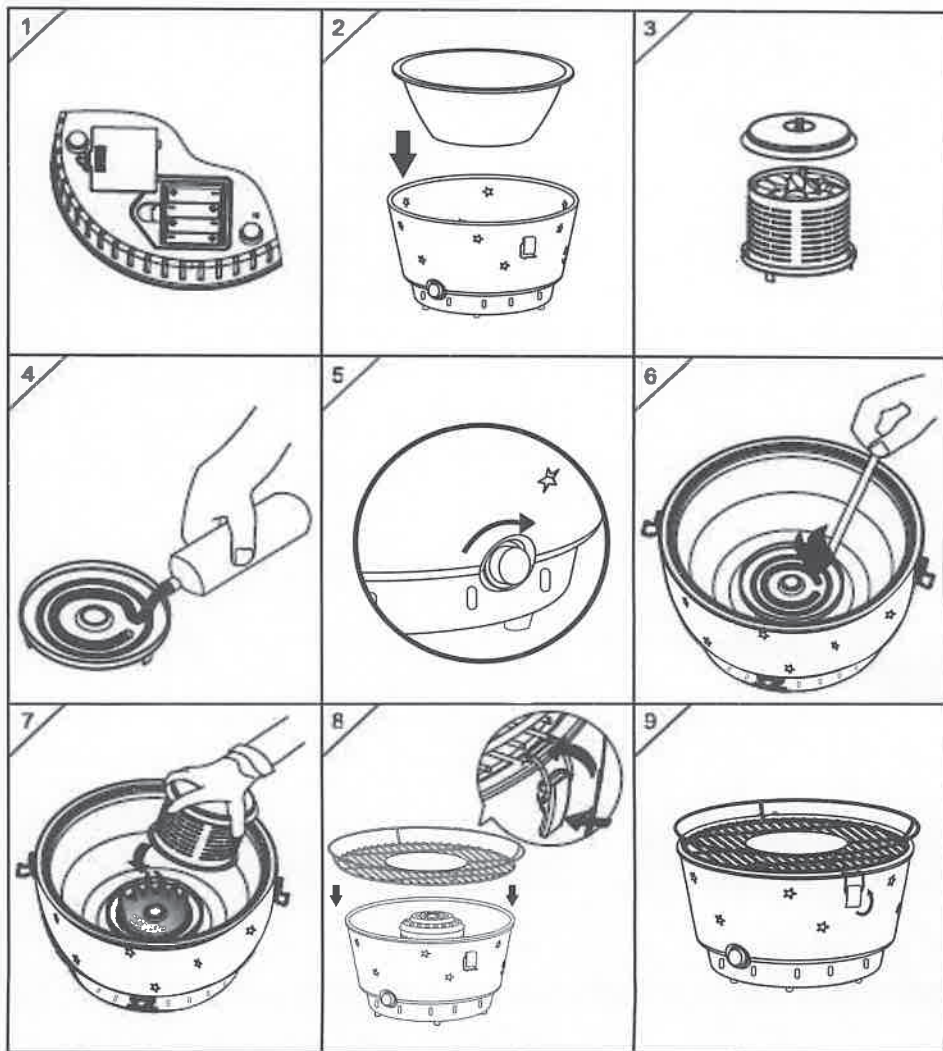
3



4

## ACCENSIONE

! ATTENZIONE UTILIZZARE SOLO ACCENDIFUOCO CONFORMI  
ALLO STANDARD EN 1860-3



Made in China  
Importato e distribuito da



**Q.bo**

q-bo.net