
















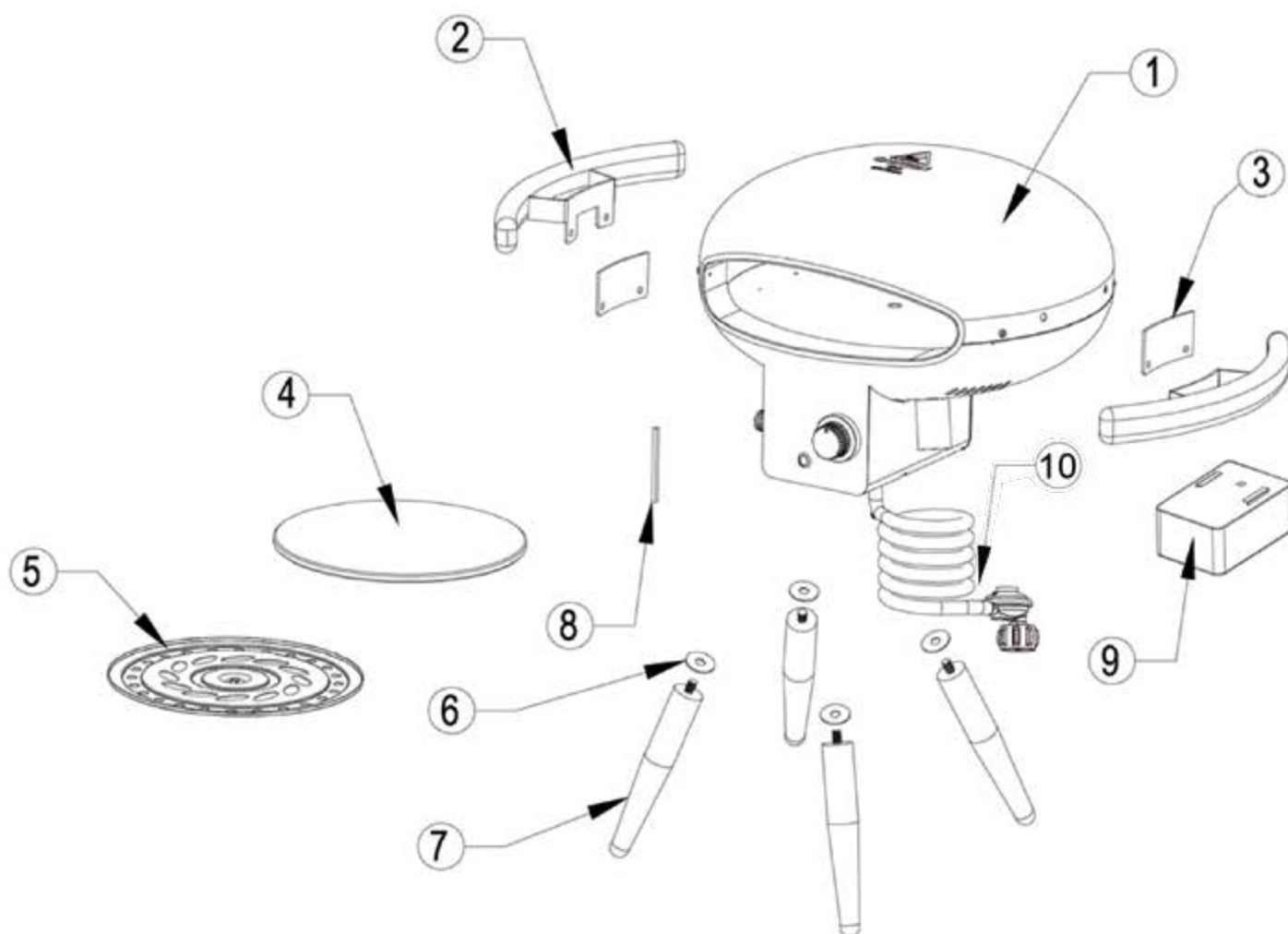
ISTRUZIONI MONTAGGIO

FORNO EASY PIZZA



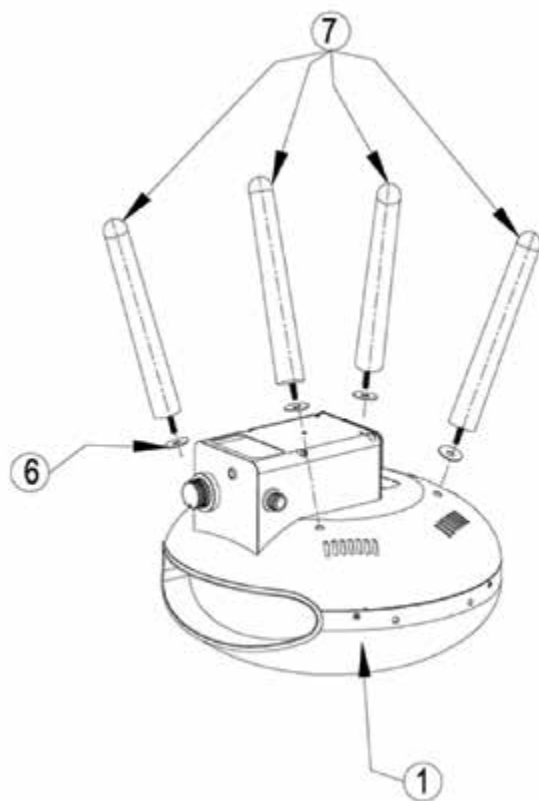
COMPONENTI

1 x 1pc	2 x 2pcs	3 x 2pcs	4 x 1pc	5 x 1pc
				
Forno	Maniglia	Cuscinetto	Pietra per pizza	Piatto girevole
6 x 4pcs	7 x 4pcs	8 x 1pc	9 x 1pc	10 x 1pc
				
Rondella	Gamba	Fermo motore	Motore rotativo	Regolatore con tubo
Viti: A x 4pc  Screw				
Batteria (non inclusa):  2D, 1.5V x 2pcs  2A x 1pc				

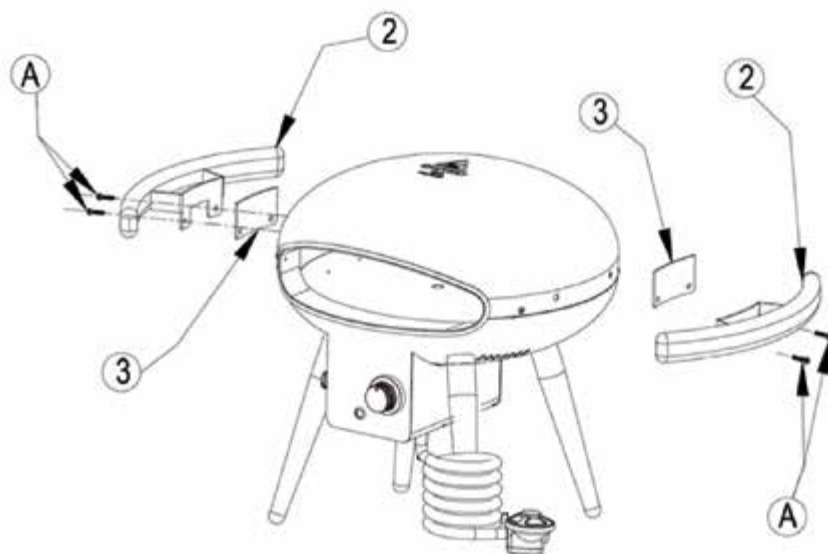


ASSEMBLAGGIO

1



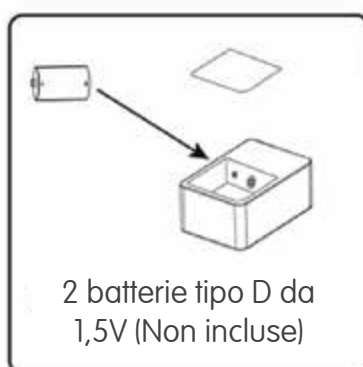
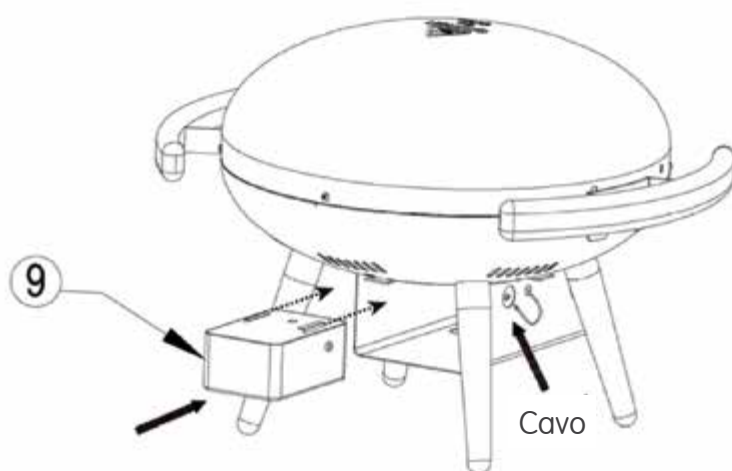
2



3

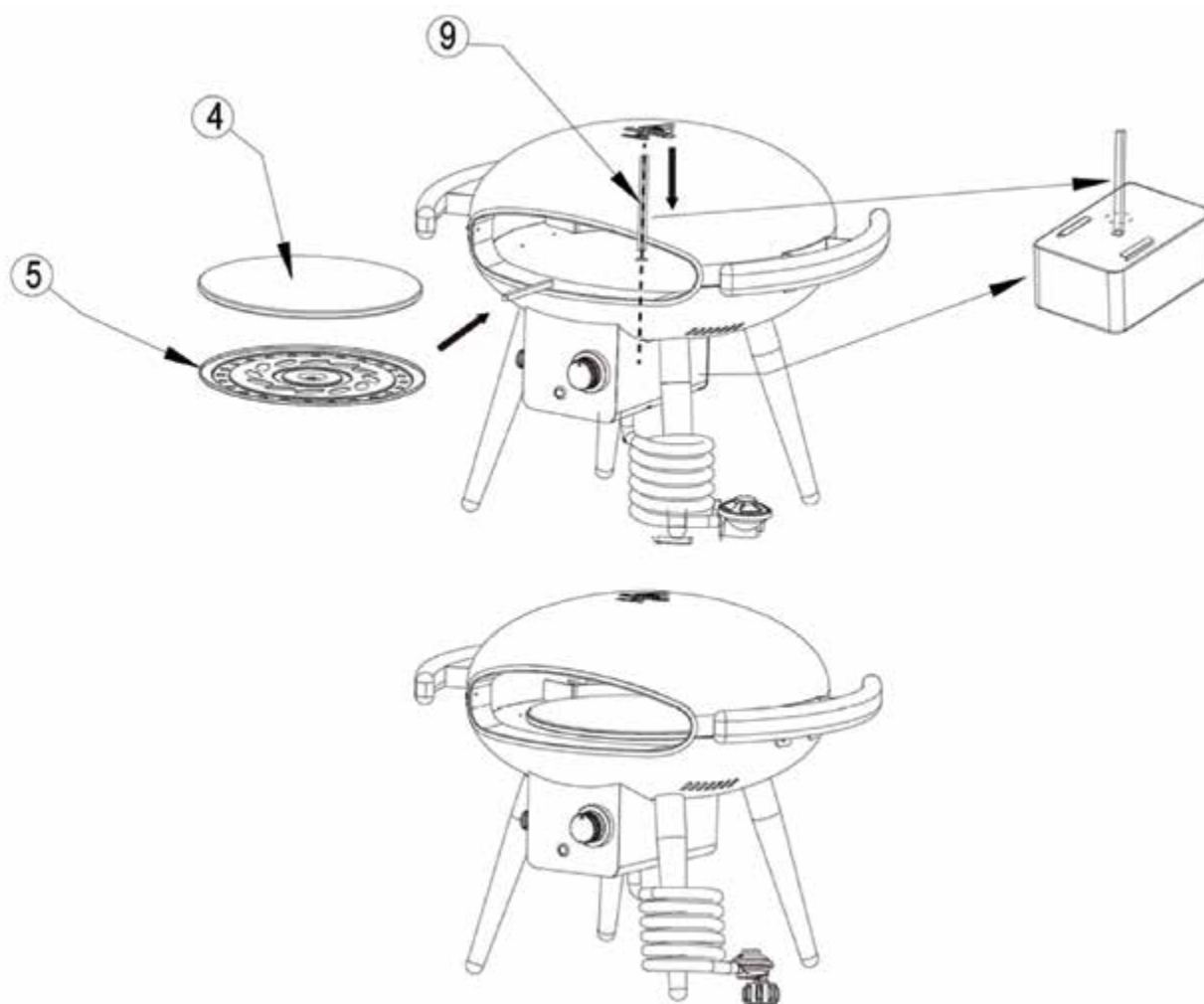
Inserire 2 batterie tipo D da 1,5 V nel motore rotativo, posizionare il motore rotativo assemblato nella scatola protettiva sotto il corpo del forno per pizza, quindi collegare il cavo nella fessura sul motore.

! ASSICURARSI CHE IL MOTORE SIA POSIZIONATO NELLA DIREZIONE CORRETTA.



4

Inserire il fermo del motore attraverso il foro centrale all'interno del forno e inserirlo nel foro del motore, quindi posizionare il piatto girevole e la pietra per pizza.



!

PRIMA DELL'UTILIZZO LEGGERE ATTENTAMENTE LE
AVVERTENZE RIPORTATE SUL MANUALE D'USO.

Inquadra il codice QR con il
tuo smartphone per scaricare
una copia di questo manuale



Lo trovi anche alla pagina
www.q-bo.net/manuali

Made in China

